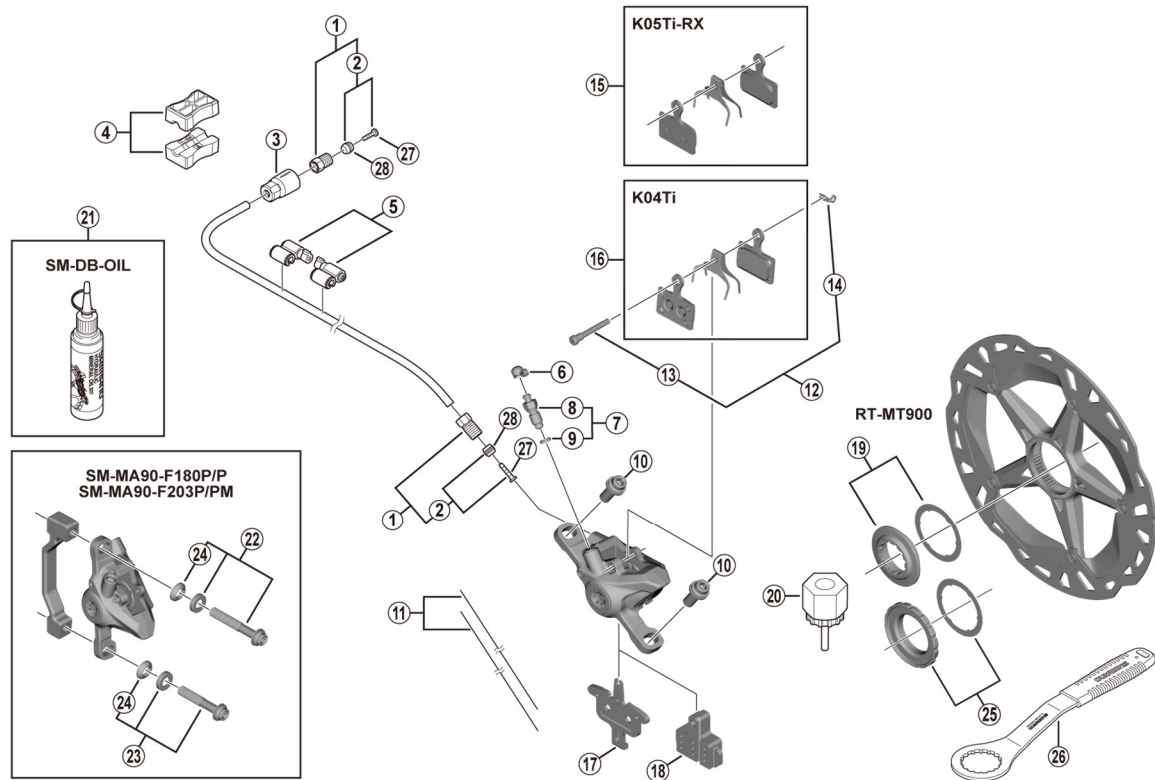


**XTR Disc Brake**  
**BR-M9100** Brake Caliper  
**RT-MT900** Disc Rotor

**SM-BH90-SS** Brake Hose



ITEM NO.	SHIMANO CODE NO.	DESCRIPTION
1	Y8KH98010	Flare nut unit
2	Y8JA98020	Olive and connector insert
3	Y1XJ16000	Cover
4	Y8H198030	TL-BH61 Shimano original tool (2 pcs.)
5	Y83098040	SM-HANG Hose supporter A and B
6	Y8B214000	Bleed nipple cap
7	Y8CL98050	Bleed nipple and seal ring
8	Y8CL24200	Bleed nipple
9	Y8B511001	O-ring for bleed nipple
10	Y8LF08000	Caliper fixing screw (M6 x 14.6)
11	Y8B298010	Wire (2 pcs.)
12	Y8J798060	Pad axle and snap retainer
13	Y8J710000	Pad axle
14	Y8J716000	Snap retainer
*	IBPK05TIRXA	K05Ti-RX Resin pad and spring (pair)
15	Y8PU98050	
*	IBPK04TIMXA	K04Ti Metal pad and spring (pair)
16	Y8PU98020	
17	Y8N218000	Pad spacer
18	Y8N219000	Bleeding spacer
19	Y8K198010	Lock ring and washer
20	Y12009230	TL-LR15 Lock ring removal tool
21	Y83998020	Mineral oil (100 ml)
	Y83998030	Mineral oil (500 ml)
22	Y8LF98040	Caliper fixing screw unit (M6 x 36.3) for SM-MA90-F180P/P
	Y8JB98010	Caliper fixing screw unit (M6 x 38.6) for SM-MA90-F203P/PM
23	Y8LF98050	Caliper fixing screw unit (M6 x 30.5) for SM-MA90-F180P/P
	Y8JB98020	Caliper fixing screw unit (M6 x 32.8) for SM-MA90-F203P/PM
24	Y8LF12000	R-washer A
25	Y26L98030	Lock ring and washer (externally serrated type)
26	Y13098000	TL-FC36 Lock ring removal tool
27	Y8JA98026	Connecting insert (100 pcs.)
28	Y8H298047	Olive (100 pcs.)

Jul.-2022-4373D  
 © Shimano Inc. I

Specifications are subject to change without notice.

**SHIMANO**